

# Windschip Project designs sailing cargo ships to reduce CO2 in seatransport.



Windfreighter is based on the fastest English three/four mastclippers. The ship is an ocean going sailing cargo ship of 3.530 BRT. It has three full rigged tripod masts and a mizzen mast.

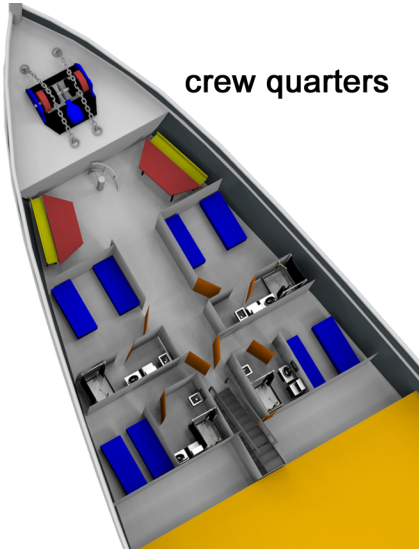
Hull: steel

Rigging: composite or aluminium

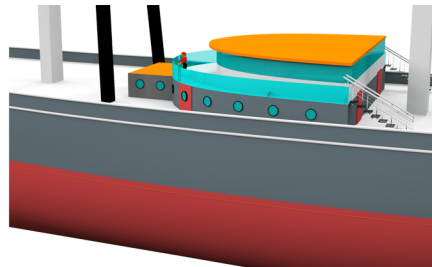
Yards: foam or aluminium

The sails can be set and furled automatically.

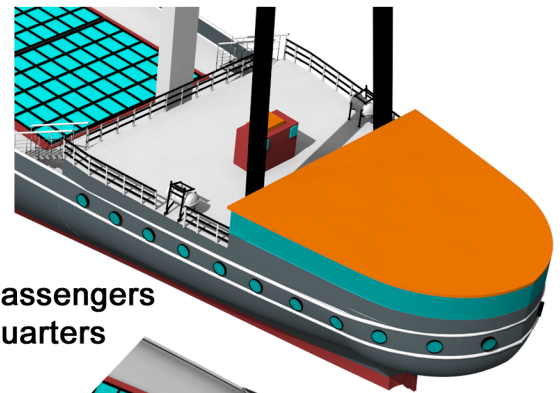
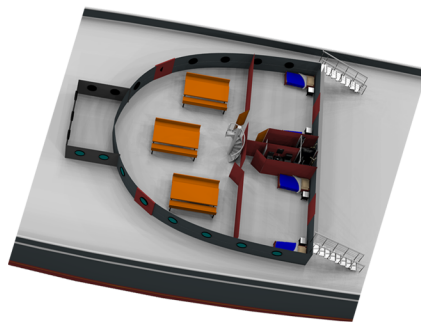
Length	113,15 m	Sailarea	4.268 m2
Beam	18,46 m	Square sails	15
Depth	12,35 m	Stay sails	3
Draft	8,80 m	Sail winches	15
Displ.	7.250 ton	Brace winches	3
Deadweight	4.250 ton	Crew	12
Engine:	E-propulsion	Passengers	12



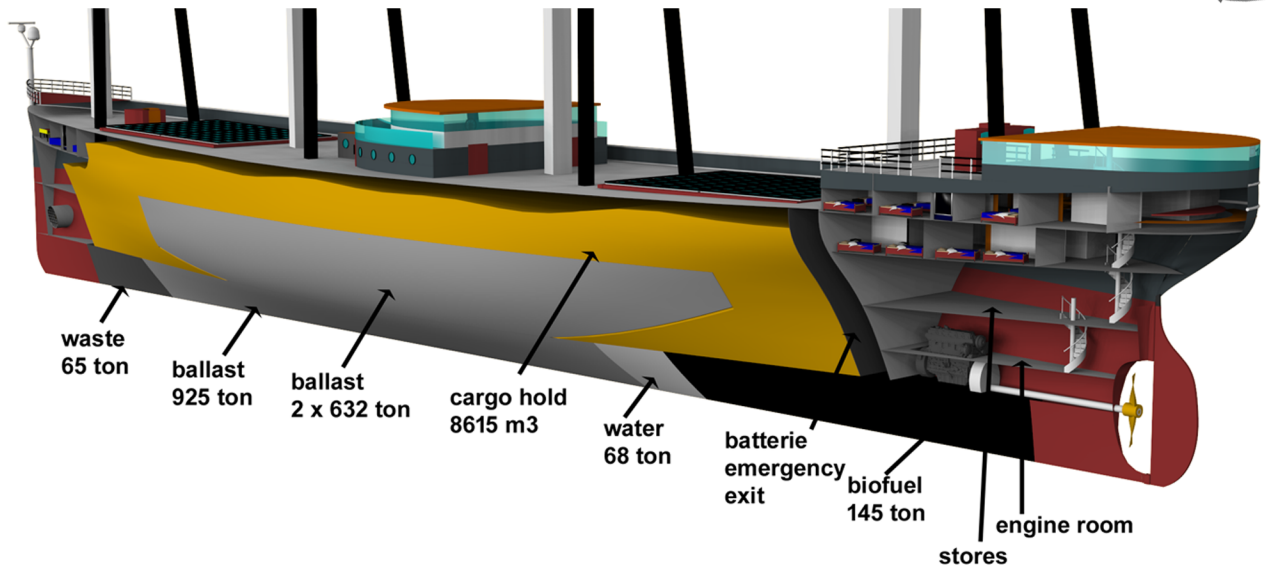
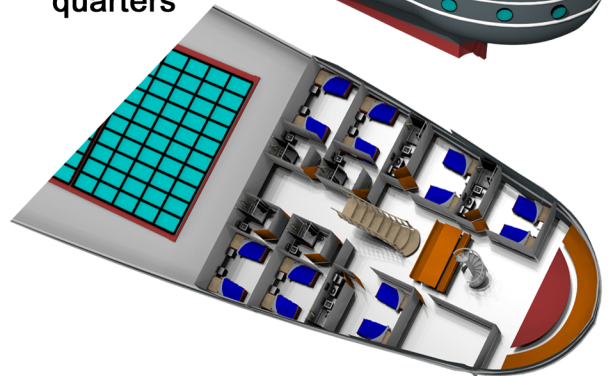
crew quarters



crew galley and captain quarters



passengers quarters



waste  
65 ton

ballast  
925 ton

ballast  
2 x 632 ton

cargo hold  
8615 m3

water  
68 ton

batterie  
emergency  
exit

biofuel  
145 ton

engine room  
stores

There is an extended dossier of windfreighter available.  
Order: [www.windschip.nl](http://www.windschip.nl) - [info@windschip.nl](mailto:info@windschip.nl)